

**STOP**  
**problem gambling**  
Call 1800 6 668 668  
[www.ncpg.org.sg](http://www.ncpg.org.sg)

**NCG**  
NATIONAL COUNCIL  
ON PROBLEM GAMBLING

Often, the people who really suffer from problem gambling aren't the gamblers.

07/08  
ANNUAL REPORT



Often, the people who really suffer from problem gambling aren't the gamblers

**STOP**  
NCPG  
problem gambling  
Call 1800 666 8668  
www.ncpg.org.sg

# Contents

Section 01 Chairman's Message ..... 01

Section 02 NCPG's Key Milestones ..... 03

Section 03 The Council At A Glance ..... 07

Section 04 The Year In Review ..... 11

Section 05 Moving Forward (2008/2009) ..... 23

Section 06 Annexes ..... 27

- Financial Page
- Directory of NCPG Partners
- Contact Us



# Chairman's Message

The NCPG Annual Report 2007/2008



It's a privilege to serve on the National Council on Problem Gambling (NCPG) in its second term. The term runs from September 2007 through August 2009; just before the opening of the first integrated resort with casino. These are challenging times, as we prepare for the implementation of casino exclusion measures, to minimise the number of Singaporeans who suffer from problem gambling.

To meet our aims, we have increased our council from 15 to 19 members. The enlarged team includes prominent experts from the legal, clinical treatment, counselling, research and religious fields. We have also enlisted several new resource persons to our sub-committees of responsible gambling and public communications.

As the nation's umbrella body for problem gambling efforts, we are delighted to receive endorsements from international experts that Singapore is well-organised and systematic in addressing this issue. The convening of the International Advisory Panel (IAP) to the NCPG and National Addictions Management Centre in December 2007 provided value-added inputs for areas of improvement. We will be acting on

their recommendations in the upcoming months, especially in building capability and research.

We will continue our public education efforts among Singaporeans to help them understand the risks of excessive gambling, recognise the signs of problem gambling, and know the help avenues available. The Government has increased NCPG's annual budget from S\$1 million to S\$3 million this year. Our media campaign for 2008 with the theme 'Often the people who really suffer from problem gambling aren't the gamblers' has been well-received and our counselling helplines, 1800-X-GAMBLE and 1800-666-8668 are now better known among Singaporeans.

It is also our intention to disseminate the helpline numbers through our gambling operators. We would be launching a training programme for frontline staff of gambling operators and an operational Resource Manual for the NCPG Responsible Gambling Code of Practice very soon. Our target is for all personnel at gambling outlets to be able to help identify and refer potential problem gamblers to our counselling services.

*Lim Hock San*

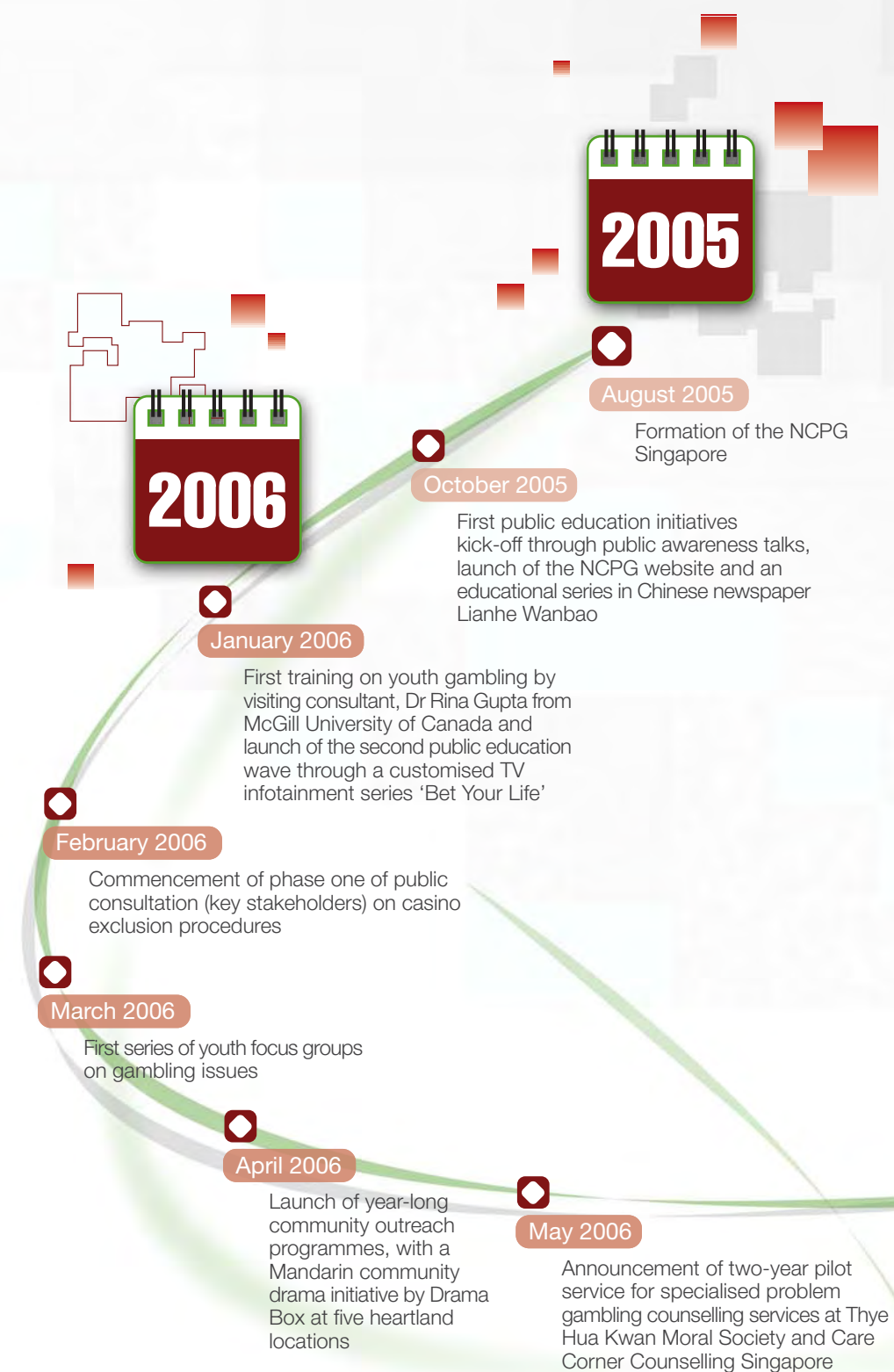
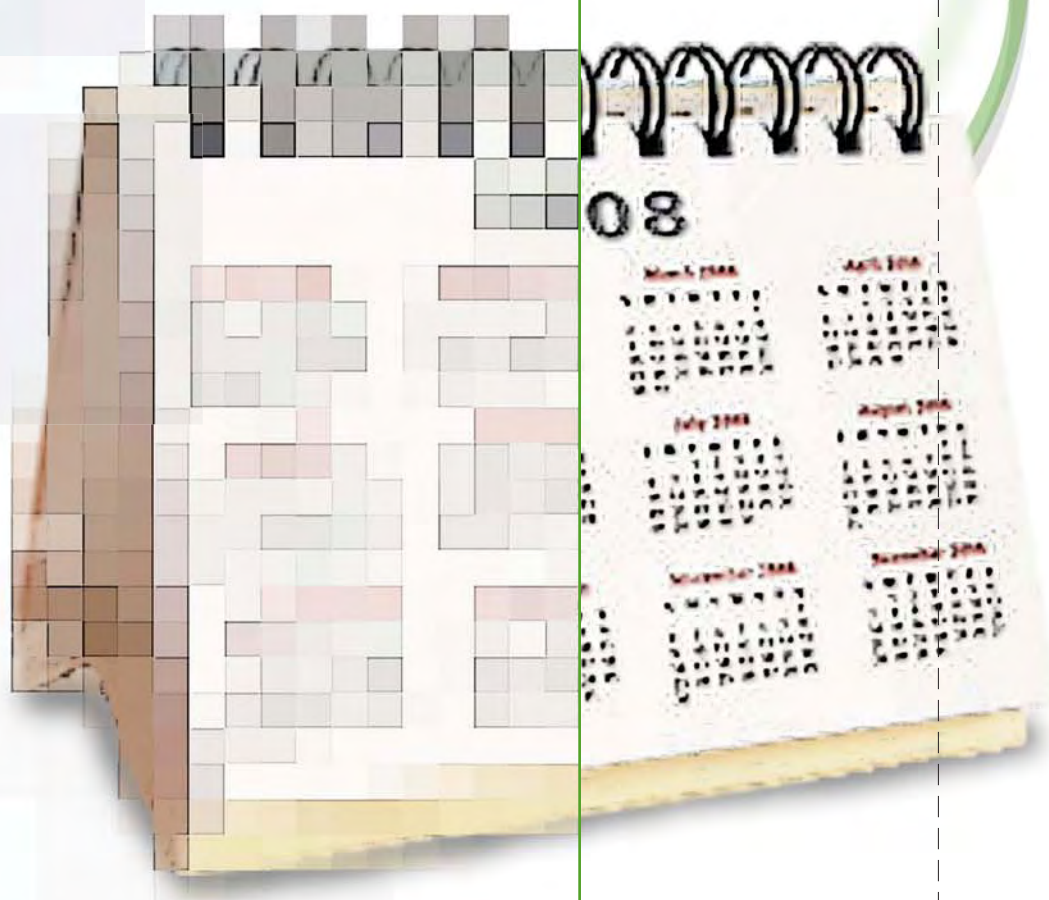
Lim Hock San  
Chairman  
National Council on Problem Gambling



## SECTION 02

**NCPG's Key Milestones:****August 2005 to August 2008**

The NCPG Annual Report 2007/2008



2008

January 2008

Appointment of NCPG's first professional communications agency, Young & Rubicam

February 2008

Launch of NCPG's 2008 integrated media campaign with 'the little girl with piggy bank' creative during Lunar New Year

March 2008

Pilot training programme for frontline staff of gambling operators on responsible gambling measures

May 2008

Issuance of media response to MCYS' survey on gambling participation

June 2008

Visit of Dr Jeffery Marotta from Oregon, United States for the review of the three-tier service framework

July 2008

Second wave of NCPG's 2008 integrated media campaign during the English Premier League season and Youth Focus Groups on perceptions and attitudes of youths on gambling

December 2006

Commencement of phase two of public consultation (general public) on casino exclusion procedures

September 2006

Completion and sharing of NCPG's first annual perceptions and attitudes survey on gambling issues

June 2006

Public education campaign against excessive soccer gambling during World Cup season via print advertisements and a public forum by Hong Kong expert Dr Gracemary Leung

December 2007

Consolidation of problem gambling counselling telephone helplines under Institute of Mental Health's Community Addictions Management Programme (CAMP) and convening of the International Advisory Panel to NCPG and National Addictions Management Programme

November 2007

Completion and sharing of NCPG's second annual perceptions and attitudes survey on gambling issues

September 2007

Start of NCPG Term Two and expansion of the Council from 15 to 19 members

August 2007

End of NCPG Term One

July 2007

Inaugural Singapore Problem Gambling conference and launch of NCPG's voluntary Responsible Gambling Code of Practice

June 2007

Submission of recommendations on casino exclusion procedures to Ministry of Community Development, Youth and Sports

2007

March 2007

Launch of short film 'RISK', produced by youths for youths, in collaboration with South East Community Development Council



Often, the people who really suffer from problem gambling aren't the gamblers

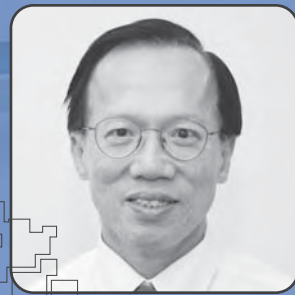
一个人嗜赌 身边人受苦。



# The Council At A Glance

The NCPG Annual Report 2007/2008

## Council Chairman



**Mr Lim Hock San**  
President & CEO  
United Industrial Corporation Ltd

“ To meet our aims, we have increased our council from 15 to 19 members. The enlarged team includes prominent experts from the legal, clinical treatment, counselling, research and religious fields. ”

## Sub-committee Chairpersons



**Public Communications**  
**Mrs Mildred Tan**  
Managing Director (Partner)  
Ernst & Young Associates Pte Ltd



**Youth**  
**Ms Debra Soon**  
Chief Editor  
MediaCorp News



**Public Consultation**  
**Mr Tan Kian Hoon**  
Chairman  
National Crime Prevention Council



**Research**  
**Professor David Chan**  
Professor of Psychology  
Vice Provost (Research & Graduate Studies)  
Singapore Management University



**Responsible Gambling**  
**Mr Goh Joon Seng**  
Consultant  
Lee & Lee Advocates & Solicitors



**Service Delivery**  
**Dr Sudha Nair**  
Assistant Professor  
Department of Social Work  
Faculty of Arts and Social Sciences  
National University of Singapore

## Members



**Mr S. Rajendran**  
Chairman  
Hindu Endowments Board



**Mr Kwek Leng Joo**  
Managing Director  
City Developments Ltd



**Dr Ang Yong Guan**  
Psychiatrist  
Ang Yong Guan Psychiatry



**Mr Mohd Guntor Sadali**  
Editor  
Berita Harian & Berita Minggu



**Mr Joachim Lee**  
Executive Director  
Tampines Family Service Centre



**Associate Professor Fred Long Foo Yee**  
Adjunct Associate Professor  
Division of Psychology  
College of Humanities Arts and Social Sciences  
Nanyang Technological University



**Dr Ang Beng Choo**  
Advisor  
Brahm Education Centre



**Mr Tan Thiam Lye**  
Chairman  
Taoist Federation (Singapore)



**Ms Elaine Lim**  
Deputy Director  
Humanities and Aesthetics Branch 2  
Curriculum Planning and Development Division  
Ministry of Education



**Dr Bibi Jan Mohd Ayyub**  
President  
Singapore Malay Teachers' Union



**Dr Lim Yun Chin**  
Consultant Psychiatrist  
Raffles Medical Group



**Venerable Seck Kwang Phing**  
Secretary-General  
Singapore Buddhist Federation

## Public Communications Sub-committee

1. Mrs Mildred Tan, Managing Director (Partner), Business Advisory Services, Ernst & Young (Chair)
2. Ms Debra Soon, Chief Editor, MediaCorp News
3. Mr Tan Kian Hoon, Chairman, National Crime Prevention Council
4. Dr Ang Beng Choo, Advisor, Brahm Education Centre
5. Mr Kwek Leng Joo, Managing Director, City Developments Ltd
6. Mr Tan Thiam Lye, Chairman, Taoist Federation
7. Mr Mohd Guntor Sadali, Editor, Berita Harian & Berita Minggu
8. Dr Bibi Jan Ayyub, President, Singapore Malay Teachers' Union
9. Ven Seck Kwang Phing, Secretary-General, Singapore Buddhist Federation
10. Ms Lim Sau Hoong, CEO, 10AM Communications
11. Mr Robert Tan, Partner, Tangible Consulting
12. Ms Ooi Hui Mei, Director (Corporate Communications), People's Association

## Public Consultation Sub-committee

1. Mr Tan Kian Hoon, Chairman, National Crime Prevention Council (Chair)
2. Mrs Mildred Tan, Managing Director (Partner), Business Advisory Services, Ernst & Young
3. Mr S Rajendran, Chairman, Hindu Endowments Board
4. Dr Ang Yong Guan, Psychiatrist, Ang Yong Guan Psychiatry
5. Mr Mohd Guntor Sadali, Editor, Berita Harian & Berita Minggu
6. Ven Seck Kwang Phing, Secretary-General, Singapore Buddhist Federation
7. Mr Goh Joon Seng, Consultant, Lee & Lee Advocates & Solicitors

## Youth Sub-committee

1. Ms Debra Soon, Chief Editor, MediaCorp News (Chair)
2. Ms Elaine Lim, Deputy Director, Humanities and Aesthetics Branch 2, Curriculum Planning and Development Division, Ministry of Education
3. Dr Bibi Jan Ayyub, President, Singapore Malay Teachers' Union
4. Mr Joachim Lee, Director, Tampines Family Service Centre
5. Dr Lim Yun Chin, Consultant Psychiatrist, Raffles Counselling Centre, Raffles Hospital

## Research Sub-committee

1. Professor David Chan, Professor of Psychology, Vice Provost (Research & Graduate Studies), Singapore Management University (Chair)
2. Dr Sudha Nair, Assistant Professor, Department of Social Work, Faculty of Arts and Social Sciences, National University of Singapore
3. Dr Ang Beng Choo, Advisor, Brahm Education Centre
4. Associate Professor Fred Long, Adjunct Associate Professor, Division of Psychology, Nanyang Technological University

## Service Delivery Sub-committee

1. Dr Sudha Nair, Assistant Professor, Department of Social Work, Faculty of Arts and Social Sciences, National University of Singapore (Chair)
2. Dr Ang Yong Guan, Psychiatrist, Ang Yong Guan Psychiatry
3. Mr Joachim Lee, Director, Tampines Family Service Centre
4. Dr Lim Yun Chin, Consultant Psychiatrist, Raffles Counselling Centre, Raffles Hospital
5. Associate Professor Fred Long, Adjunct Associate Professor, Division of Psychology, Nanyang Technological University

## Responsible Gambling Sub-committee

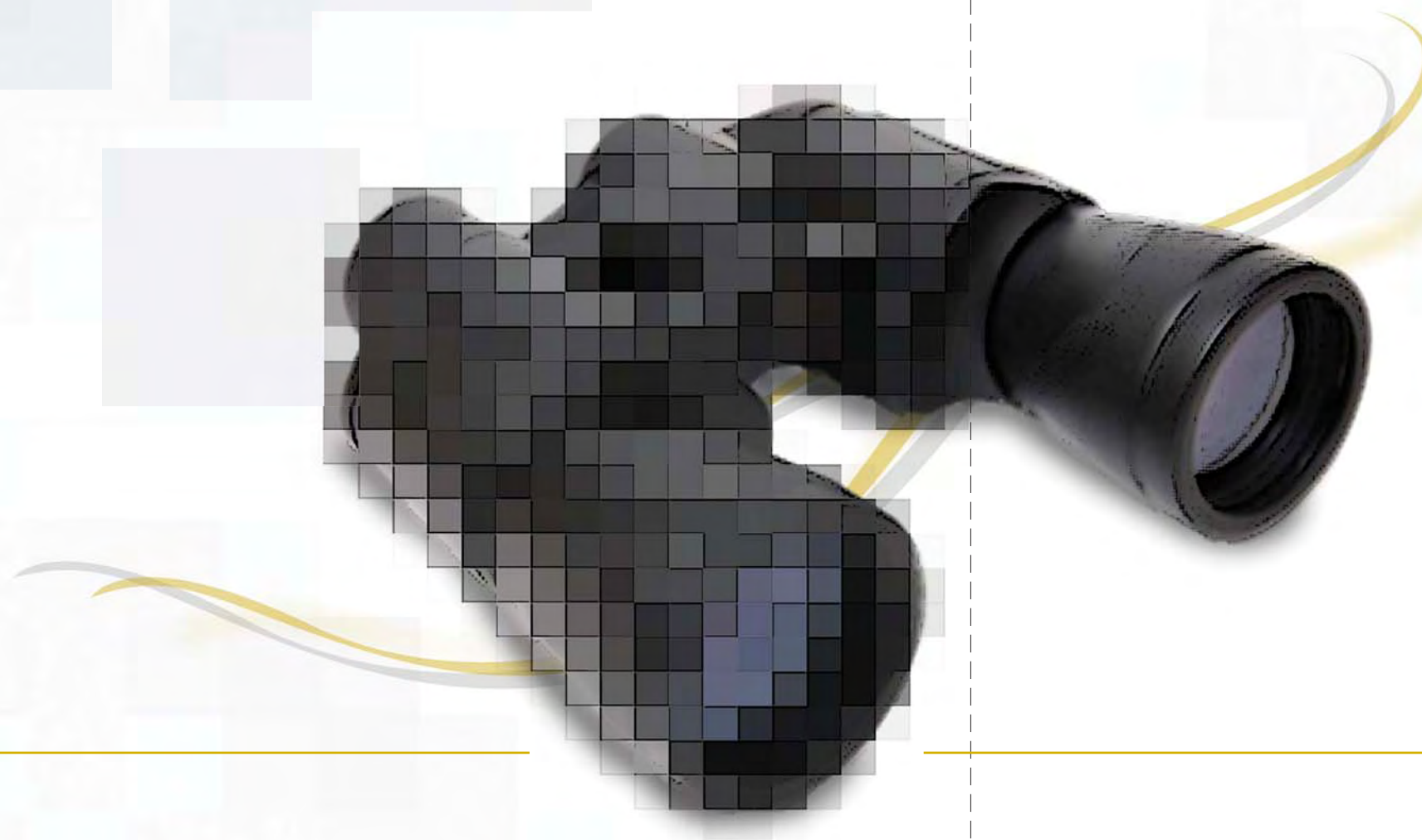
1. Mr Goh Joon Seng, Consultant, Lee & Lee Advocates & Solicitors (Chair)
2. Mr Kwek Leng Joo, Managing Director, City Developments Ltd
3. Ms Debra Soon, Chief Editor, MediaCorp News
4. Mr Tan Kian Hoon, Chairman, National Crime Prevention Council
5. Mr S Rajendran, Chairman, Hindu Endowments Board
6. Mr Ricky Sim, Managing Director, Chesterton International



## SECTION 04

# The Year In Review

The NCPG Annual Report 2007/2008



Building on our strong foundation established in Term One, the NCPG has implemented several key initiatives this year (September 2007 to August 2008):

## **International Advisory Panel to the National Council on Problem Gambling and National Addictions Management Centre**

An International Advisory Panel (IAP) to the National Council on Problem Gambling and National Addictions Management Centre, co-chaired by Professor David Chan and Professor Goh Chee Leok and comprising eight experts in the fields of problem gambling and other addictions, was formed to help the NCPG develop expertise in research, services and prevention. The members are as follows:

### ■ Singapore

Co-Chairman: Professor David Chan,  
Professor of Psychology and Vice Provost  
(Research & Graduate Studies),  
Singapore Management University

Co-Chairman: Professor Goh Chee Leok,  
Senior Consultant, Office of the Director of  
Medical Services, Ministry of Health and Senior  
Consultant, National Skin Centre

### ■ Australia

Dr Alex Blaszczyński, Chair in Psychology,  
School of Psychology, University of Sydney



#### Canada

Dr Jeffery Derevensky, Professor and Director of Training in School/Applied Child Psychology and Co-Director, International Centre for Youth Gambling Problems and High-Risk Behaviours, McGill University

#### Hong Kong

Dr Gracemary Leung, Director, Psychological Services Unit, University of Hong Kong

#### New Zealand

Dr Samson Tse, Acting Director, Centre for Gambling Studies and Associate Professor, Mental Health Development Programme, University of Auckland

#### United Kingdom

Professor John Strang, Director, National Addictions Centre, Institute of Psychiatry (King's College, London)

#### United States of America

Dr Lori Rugle, Director, Gambling Treatment Programme, Department of Veterans Affairs Medical Centre

Professor Dwayne Simpson, Director, Institute of Behavioural Research, Texas Christian University

Dr Rachel Volberg, President, Gemini Research Ltd.

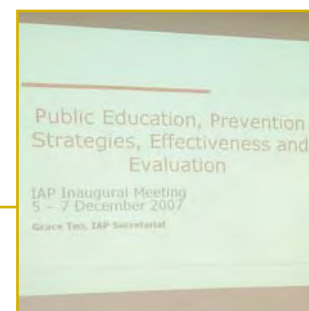


“ The panel is an important asset to the NCPG as Singapore is still in its early stages of development in understanding problem gambling. These experts offer valuable insights into the trends, challenges, best practices and solutions in different parts of the world from which the NCPG can adopt or adapt for application in Singapore. ”

The panel is an important asset to the NCPG as Singapore is still in its early stages of development in understanding problem gambling. These experts offer valuable insights into the trends, challenges, best practices and solutions in different parts of the world from which the NCPG can adopt or adapt for application in Singapore.

The IAP was set up with involvement from the NCPG, the Ministry of Community Development, Youth and Sports (MCYS) and the Ministry of Health (MOH). It serves to advise Singapore on prevention and control strategies to address problem gambling and other addictions such as drug, alcohol and behavioural addiction.

The IAP convened its inaugural meeting in Singapore from 5 to 7 December 2007. It commended Singapore's proactive and coordinated approach in dealing with problem gambling and other addictions and provided several useful recommendations to continue to focus on public education, research and the building of capabilities to address problem gambling.





“ The tagline ‘Often the people who suffer from problem gambling aren’t the gamblers’ is a powerful reminder that problem gambling has adverse consequences on one’s family. This was developed after extensive study by both the NCPG and Y&R on the most effective communication strategy.”

### NCPG Integrated Media Campaign 2008

The government increased NCPG’s annual public education budget from S\$1 million to S\$3 million in 2008. A professional advertising and media agency, Young & Rubicam (Y&R) was appointed to advise the NCPG on an integrated media strategy.

The creative concept is based on a little girl protecting her piggy bank of savings from her father, who is a problem gambler. The tagline ‘Often the people who suffer from problem gambling aren’t the gamblers’ is a powerful reminder that problem gambling has adverse consequences on one’s family. This was developed after extensive study by both the NCPG and Y&R on the most effective communication strategy. Members of the public are encouraged to advise problem gamblers, their families and friends to seek help early: “Stop problem gambling. Call 1800-666-8668.”

The campaign was launched in February 2008 to coincide with the Lunar New Year season where there is traditionally an increase in social gambling activities. It was carried over mass media (TV, radio, print) as well as outdoor media (bus-stop shelter panels, food court table tops). The second burst of the campaign was conducted in July 2008 during the English Premier League season. We will monitor the effectiveness of the overall media campaign in early 2009.



### Community Outreach Programmes

By partnering non-profit organisations, drama companies and event management experts, the NCPG has reached out to 30,000 Singaporeans through community-based education activities since August 2005. We have focused on educating the masses on what problem gambling is, what its signs are and where to seek help. In 2008, we have shifted our focus to target the seniors as well as the low income segment of our population.

We approved two new funding applications in May 2008 and are in the process of kicking them off. These include a seniors’ problem gambling ambassadors’ programme by YAH! College. Short form for Young-At-Heart, YAH! is the first community college in Singapore to promote lifelong learning among senior citizens. It will launch a module on problem gambling under its new Certificate of Community Service in the second half of 2008, where it aims to train 40 seniors to become problem gambling ambassadors who will in turn reach out to 7,500 seniors by mid 2009.

Another programme is conducted by D’Rama Arts. The drama company has already completed two rounds of roadshows reaching 2,600 persons since November 2006. Starting from September 2008, it will be working with voluntary organisations to educate 2,000 senior citizens on the potential harms of gambling addiction through a new play.

For blue-collar workers in the manufacturing, transport sectors as well as self-employed workers, the NCPG will continue to work with its event management partner, Olive Consulting. We recently launched a new roadshow featuring a stand-up skit and a roving exhibition for hawkers.



## Youth Programmes

The NCPG's community education efforts for youths have reached a total of 12,000 students since 2006. We have conducted an evaluation of several pilot programmes and have renewed our support for the Methodist Children and Youth Centre (MCYC)'s 'Win Big, Don't Bet' roadshow. The roadshow, comprising a docudrama, a talk on youth gambling, a poster display section and interactive computer games, has toured 10 schools and reached 9,000 secondary and tertiary students to date. The MCYC plans to double this figure by end 2008.

Research and expert studies including discussion at the inaugural Singapore Problem Gambling Conference and the IAP continue to confirm that young people are two to four times more likely to become problem gamblers than adults.

There is an urgent need for us to develop the most appropriate messages, content and delivery channels for our preventive education for young people. The NCPG consulted four groups of youths in July and August 2008, including schooling youths in upper primary, secondary and tertiary institutions; as well as youths-at-risk. The findings will provide useful inputs for refining our youth programmes going forth.

In addition, work is underway for a revamp of the NCPG website and we are looking at ways of making this into a key communications tool for youth education.



## Strengthening the Three-Tier Service Framework

The three-tier service framework, providing counselling and treatment services to problem gamblers and their families, continued to be in force. Problem gamblers and their families receive counselling support at NCPG's designated centres run by Thye Hua Kwan Moral Society and Care Corner Counselling Centre, either through referrals from family service centres, or through the problem gambling helplines: 1800-X-GAMBLE or 1800-666-8668. The Institute of Mental Health's Community Addictions Management Programme (CAMP) provides advanced medical treatment for those diagnosed with pathological gambling and co-morbid conditions.

As of March 2008, our two counselling centres saw a total of 600 cases, out of which 70% are new or active cases. Recall rates of the counselling helplines have improved - between 8% to 20% of Singaporeans now know their existence, as compared to 0% to 4% in 2006.

“ Problem gamblers and their families receive counselling support at NCPG's designated centres run by Thye Hua Kwan Moral Society and Care Corner Counselling Centre, either through referrals from family service centres, or through the problem gambling helplines: 1800-X-GAMBLE or 1800-666-8668. ”





Since December 2007, enhanced support was provided to problem gamblers and their families through phone-based counselling services. Members of the public who call the helplines are given over-the-phone counselling when appropriate and then referred to one of NCPG's designated counselling centres for follow-up. The helplines have received a total of approximately 1,500 calls since 2006.

In June 2008, we engaged Dr Jeffrey Marotta to help review and strengthen the three-tier services framework. Currently a clinical consultant and associate professor at the Oregon Health Sciences University, Dr Marotta was previously director of Oregon Problem Gambling Services, known in the United States and the international arena for best practices in the design and implementation of problem gambling services.

Our commitment is to ensure that those who need assistance seek professional help early; and that our services are effective in helping problem gamblers and their families manage and recover from the addiction.



## Responsible Gambling Measures

Gambling operators will be set to become more socially responsible. While legal gambling exists to combat illegal gambling and proceeds are channelled to social and charity causes, there needs to be an appropriate social balance accorded, to ensure that gambling does not become a way of life in Singapore and that the number of people affected by problem gambling is kept to the minimum.

Following the introduction of a voluntary Responsible Gambling Code of Practice in July 2007, the NCPG has picked up its momentum in putting together a Resource Manual and a training programme for gambling operators here. 16 gambling operators, including Singapore Pools, Singapore Turf Club and several major private clubs with jackpot machines have signed onto the Code. Two pilot runs of the training for 60 frontline staff from these key operators have been conducted to date. All frontline staffs of these gambling premises are expected to be able to identify and help refer problem gamblers for counselling and treatment services, upon completion of the training.



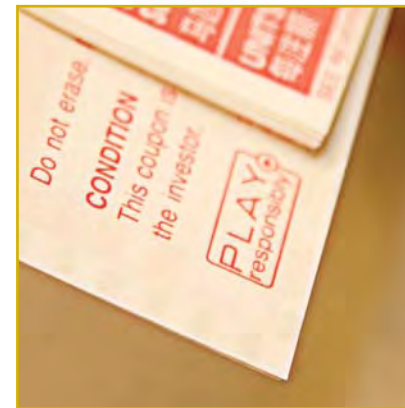


## Casino Exclusion Measures

The NCPG is given the authority to implement the casino exclusion measures under the Casino Control Act, to help prevent problem gamblers and the financially vulnerable from gambling at the casinos when the Integrated Resorts commence operations in 2009.

The three types of exclusions are namely voluntary self-exclusions, family exclusions and third-party exclusions. Voluntary self-exclusion allows an individual to bar himself from entering the casinos. Family exclusion provides for family members to prevent a problem gambler from entering the casinos and causing more harm to the family. The third party exclusion is applicable to the financially vulnerable groups, including those on social assistance, who are bankrupt, or who have poor credit records.

Following consultation with key stakeholders and members of the public in NCPG's first term, we are now into the final stage of fine-tuning the implementation processes and procedures.



## Behaviours and Perceptions of Singaporeans on Gambling

The NCPG and the MCYS released two studies on gambling behaviours, and the perceptions and attitudes of Singaporeans on gambling over the past 12 months. Survey findings indicate that gambling participation and pathological gambling rates have remained relatively stable. About half of Singapore residents aged 18 years and above have taken part in some form of gambling activity over a one year period; and between 0.7% to 1.6% of survey respondents may have a gambling addiction, based on reported symptoms suggesting probable pathological gambling.

While our perceptions survey findings show that the majority of Singaporeans continue to think that gambling is potentially harmful, and that they are aware of the signs of problem gambling, there appears to be two worrying social trends. More people now view gambling as a leisure activity and more of those who gamble started gambling earlier.

Details of the NCPG and MCYS survey findings are available on the NCPG website. These survey studies are useful barometers for the NCPG to track social trends on gambling and regularly review and refine our strategies for addressing problem gambling. The NCPG will continue to ramp up our public education efforts, targeting both the masses and young adults.

## NCPG Research Grant

One of the NCPG's key priorities is to build local research capabilities in gambling and problem gambling. In support of this aim, the NCPG has established a research grant which is available to all undergraduate and postgraduate students in Singapore, to encourage original empirical research examining issues directly related to problem gambling. In the past year, two research studies by undergraduates from the National University of Singapore's Department of Psychology have received the grant.

## SECTION 05

## Moving Forward (2008/2009)

The NCPG Annual Report 2007/2008



2008/2009

The next 12 months will be crucial for the NCPG, as we prepare for the opening of the first integrated resort with casino, which is scheduled for end 2009. The NCPG will maintain its rigour to work on these priorities:

### Implementing the Casino Exclusion Measures

The casino exclusion system is targeted to be completed by end 2008 for pilot tests. In ensuring a seamless network of hardware and software infrastructure, the NCPG will be completing the appointment of the panel of assessors and social workers, setting up standard operating procedures for the review process, and establishing a referral protocol within the social service sector by early 2009.

“ The next 12 months will be crucial for the NCPG, as we prepare for the opening of the first integrated resort with casino... ”



“ ... we will be conducting a third burst of the integrated media campaign towards the end of 2008 in addition to our regular Lunar New Year campaign in early 2009. ”

### Sustaining our Momentum in Public Education on Problem Gambling

To ensure sufficient public attention on problem gambling and related help services, we will be conducting a third burst of the integrated media campaign towards the end of 2008 in addition to our regular Lunar New Year campaign in early 2009. A public education programme on the casino exclusion measures will also be done prior to the roll-out of the application procedures.



### Promoting the Responsible Gambling Code of Practice

The NCPG will be marketing the Responsible Gambling Code of Practice more intensively. Our objective is to get at least 80% of the social clubs operating jackpot machines in Singapore to sign on and to ensure that the industry sees it in their enlightened self-interest to promote and implement responsible gambling practices.

### Capability Building for the Industry

Following the recommendations by the IAP we will be focusing on training for professionals and frontline staff in the community and social service agencies.



### Stepping Up Our Youth Programmes

We will be working more closely with the Ministry of Education to develop an integrated package for youth problem gambling prevention, helping to ensure that educators, parents and students understand and mitigate the issue well. A training programme for school counsellors on youth gambling and other addictions will be rolled out in the later half of 2008. The NCPG is also looking at engaging renowned youth gambling expert, Dr Jeffrey Derevensky from Canada's McGill University to conduct a seminar on working with youth gamblers. We will also be benchmarking parent education initiatives in other countries to develop a youth gambling prevention resource package for parents.



### Developing Research on Problem Gambling

The NCPG will continue to focus on the need to develop rigorous and useful research to provide an evidence-based approach to addressing problem gambling in Singapore. The Singapore Problem Gambling Conference 2007 and problem gambling conferences in other parts of the world, the NCPG and MCYS survey results, and the NCPG's discussions with various stakeholders and dialogue sessions with a diverse segment of the population have provided us with good reference points for the types of research studies that should be pursued here. For example, we are currently exploring several research studies on youth and older adult gambling behaviours with MCYS.



## SECTION 06

## Annexes

The NCPG Annual Report 2007/2008

- 28 **Financial Page**
- 29 **Directory of NCPG Partners**
- 31 **Contact Us**

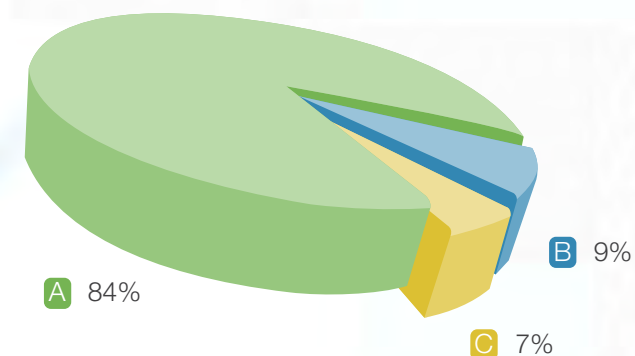
## Financial Page

### Public Education Fund

In April 2005, Dr Vivian Balakrishnan, Minister for Community Development, Youth and Sports announced that MCYS will set aside S\$1 million annually to fund public education efforts on problem gambling as well as prevention programmes run by voluntary welfare organisations and community groups. The National Council on Problem Gambling has been given the responsibility to advise MCYS on the utilisation of these funds.

The government has increased public education funding for problem gambling from S\$1 million to S\$3 million this year. This is to enable the NCPG to ramp up its media campaign, particularly in engaging a professional advertising and media agency to develop and produce an advertisement and to manage/procure media placements effectively.

The community funding made available to non-profit organisations and community/grassroots organisations remain at S\$150,000 per annum.



**For the financial year (September 2007 to August 2008), the following expenditure have been incurred for Public Education:**

<b>A</b> Public Education Over Mass Media	S\$1,239,697
<b>B</b> Public Education at Community Level	S\$126,902
<b>C</b> Publications, Collateral & PR	S\$110,099
<b>Total</b>	<b>S\$1,476,698</b>

*\*Note: Total expenditure does not equate to S\$3million as some funds would be disbursed between September 2008 to March 2009, which would be accounted for in the NCPG's next year report (2008/2009).*



The National Council on Problem Gambling works with stakeholders from the academic, social services, public and private sectors to implement its activities and commitments. Below is a directory of its partners:

## Responsible Gambling Operators

Name of Organisation	Address	Contact Numbers / Website	Email / Web Enquiry
Singapore Pools	1 Selegie Road #01-01 Paradiz Centre Singapore 188306	Tel: 6216 8168 Fax: 6883 2228 www.singaporepools.com.sg	www.singaporepools.com.sg/en/html/contactus.html
Singapore Turf Club	1 Turf Club Avenue Singapore Racecourse Singapore 738078	Tel: 6879 1000 Fax: 6879 1010 www.turfclub.com.sg	www.turfclub.com.sg/Contact/FeedBack/tabid/106/Default.aspx
Civil Service Club	60 Tessensohn Road Singapore 217664	Tel: 6294 8933 Fax: 6392 7991 www.csc.gov.sg	csc_qsm@csc.gov.sg
HomeTeamNS	2 Bukit Batok West Avenue 7 Singapore 659003	Tel: 6665 4600 Fax: 6569 4453 www.hometeamns.sg	enquiries@HomeTeamNS.sg
NTUC Club	1 Pasir Ris Close Singapore 519599	Tel: 6589 1666 Fax : 6582 5332 www.ntucclub.com	feedback@ntucclub.com.sg
SAFRA Club	1/A Tampines Street 92 Singapore 528882	Tel: 6785 8800 Fax: 6788 8405 www.safra.sg	tmclub@safra.sg
The Grassroots' Club	190 Ang Mo Kio Avenue 8 Singapore 568046	Tel: 6554 2350 Fax: 6554 2347 www.grassrootsclub.org.sg	PR@grassrootsclub.org.sg
Club HDB	Leisure and Learning Centre HDB Hub 3rd Storey 480 Lorong 6 Toa Payoh Singapore 310480	Tel: 6490 1111 Fax: 6490 1033 www.hdb.gov.sg	hdbmailbox@hdb.gov.sg
JOM - Clubhouse for Police Officers	31 Ah Hood Road Singapore 329979	Tel: 6353 3131 Fax: 6356 3949 www.jom.org.sg	info@jom.org.sg
Ministry of National Development Recreation Club	7 Maxwell Road #06-01 Annex B MND Complex Singapore 069111	Tel: 6223 7439	-
The People's Association Staff Club	101A Eillas Road Singapore 519886	Tel: 6584 2373	-
Nanyang Technological University Alumni Club	11 Slim Barracks Rise (Off North Buona Vista Road) Singapore 138664	Tel: 6777 1101 www.ntualumni.org.sg	ntua@ntualumni.org.sg

## Responsible Gambling Operators (Cont'd)

Name of Organisation	Address	Contact Numbers / Website	Email / Web Enquiry
Senior Police Officers' Mess	153 Mount Pleasant Road Singapore 290153	Tel: 6254 0000 / 6359 4244	-
Jurong Town Corporation Recreation Club	The JTC Summit 8 Jurong Town Hall Road Singapore 609434	Tel: 6885 5188 / 9 www.jtc.gov.sg	hungchi@jtc.gov.sg
Singapore Police Co-operative Club	21 Middle Road SPCC Building Singapore 188931	Tel: 6332 5788 Fax: 6339 4933	spcc@pacific.net.sg
Singapore Polytechnic Graduates' Guild	1010 Dover Road Singapore 139658	Tel: 6796 9988 Fax: 6796 9989 www.spgg.org.sg	pr@spgg.org.sg

## NCPG Counselling & Treatment Centres

Name of Organisation	Address	Contact Numbers / Website	Email / Web Enquiry
Institute of Mental Health - Community Addictions Management Programme	10 Buangkok View Singapore 539747	1800-X-GAMBLE 1800-666-8668 www.camp.org.sg	camp@imh.com.sg
Care Corner Counselling Centre	62B Lorong 4 Toa Payoh #02-143 Singapore 312062	Tel: 6353 1180 www.carecorner.org.sg	feedback@carecorner.org.sg
Thye Hua Kwan Moral Society	1 North Bridge Rd #03-33 High Street Centre Singapore 179094	Tel: 6337 1201 www.thkms.org.sg	-

## Academic Institutions

Name of Organisation	Address	Contact Numbers / Website	Email / Web Enquiry
National University of Singapore - Department of Social Work	Blk AS3 Level 4 3 Arts Link Singapore 117570	Tel: 6516 3812 Fax: 6778 1213 www.nus.edu.sg	-

## Secretariat Support

Name of Organisation	Address	Contact Numbers / Website	Email / Web Enquiry
Ministry of Community Development, Youth and Sports - Elderly, Disability and Gambling Safeguards Division	512 Thomson Road #04-00 MCYS Building Singapore 298136	Tel: 6354 8154 Fax: 6258 3161 www.mcys.gov.sg www.ncpg.org.sg	admin@ncpg.org.sg



## Resource Support

Name of Organisation	Address	Contact Numbers / Website	Email / Web Enquiry
Ministry of Home Affairs - Policy & Operations Division	New Phoenix Park 28 Irrawaddy Road Singapore 329560	Tel: 6478 7010 Fax: 6254 6250 www.mha.gov.sg	www.mha.gov.sg/ feedback.aspx
Ministry of Education	1 North Buona Vista Drive Singapore 138675	Tel: 6872 2220 Fax: 6775 5826 www.moe.gov.sg	contact@moe.gov.sg
People's Association	9 Stadium Link Singapore 397750	1800-I-CALL-PA 1800-422-5572 www.pa.gov.sg	pa@pa.gov.sg
Casino Regulatory Authority - Policy, Licensing and Investigation	460 Alexandra Road #01-01 PSA Building Singapore 119963	Tel: 6501 7000 Fax: 6273 0917 www.cra.gov.sg	feedback@cra.gov.sg

## Community Outreach

Name of Organisation	Address	Contact Numbers / Website	Email / Web Enquiry
D'Rama Arts Pte Ltd	52 Woodlands Street 13 #06-05A Singapore 738603	Tel: 6224 4772 Fax: 6224 8943 www.drama4all.com	drama@pacific.net.sg
Methodist Children and Youth Centre	106 Bukit Batok Central #01-217 Singapore 650106	Tel: 6562 2211 Fax: 6569 8038 www.mcy.c.mws.org.sg	admin@mcy.c.mws.org.sg
Olive Consulting Pte Ltd	231A South Bridge Road Singapore 058780	Tel: 6325 6030 Fax: 6221 4511	marketing@olivegrp.com
Young-At-Heart (YAH!) College	261 Waterloo Street #02-07 Waterloo Centre Singapore 180261	Tel: 6445 0300 Fax: 6336 3411 www.yah.org.sg	contact@yah.org.sg
Fei Yue Community Services	604 Choa Chu Kang Street 62 #01-53 Singapore 680604	Tel: 6563 1106 Fax: 6416 2182 www.fy.c.s.org	admin@fy.c.s.org
Southwest Community Development Council	The JTC Summit 8 Jurong Town Hall Road #26-06 Singapore 609484	Tel: 6316 1616 Fax: 6316 7250 www.southwestcdc.org.sg	southwest_cdc@pa.gov.sg

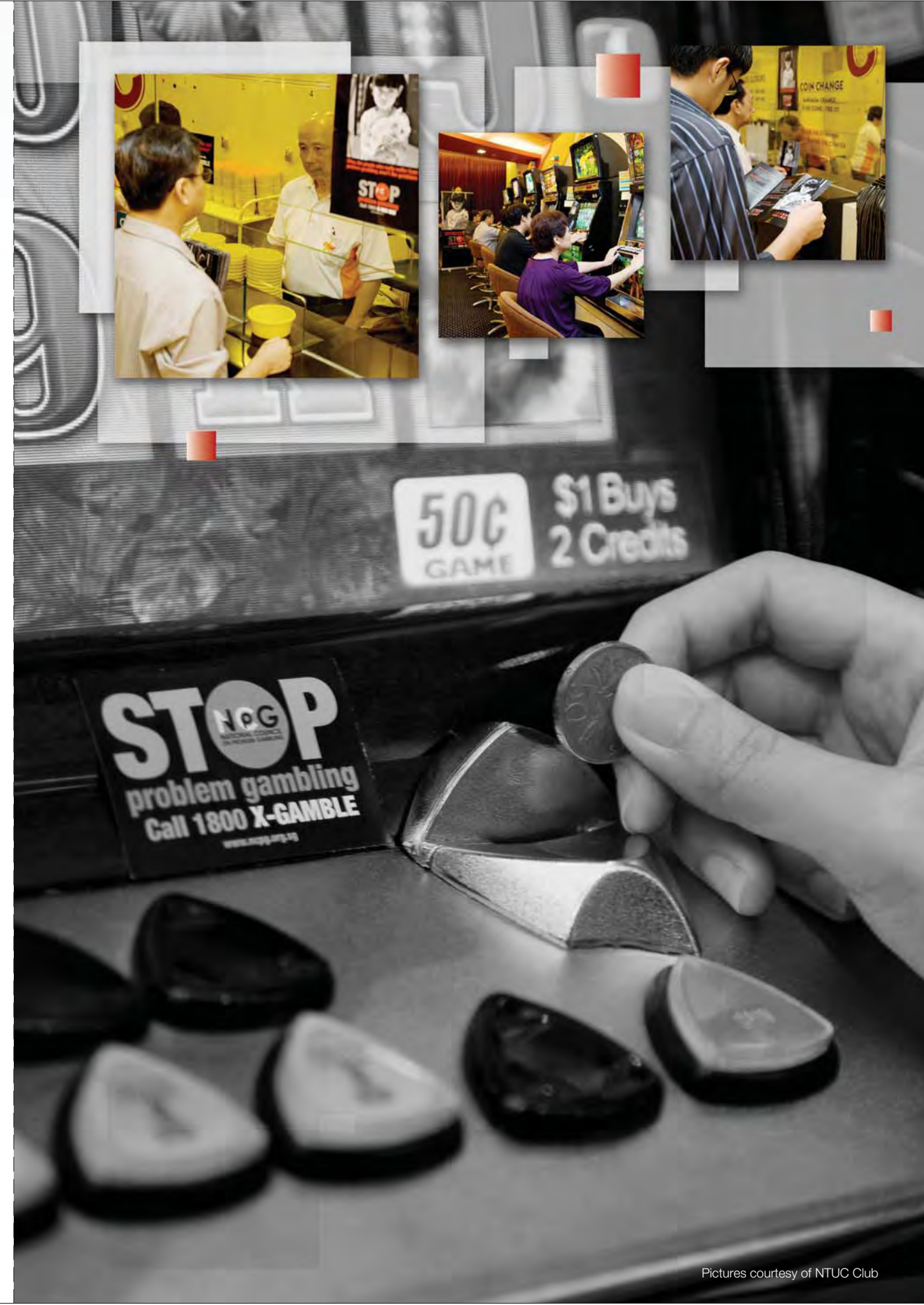
# Contact Us

## Secretariat C/o Ministry of Community Development, Youth and Sports (MCYS)

512 Thomson Road  
#04-00 MCYS Building  
Singapore 298136

Tel : (65) 6354 8154  
Fax : (65) 6258 3161  
Email : admin@ncpg.org.sg  
Website : www.ncpg.org.sg

Annexes



Pictures courtesy of NTUC Club